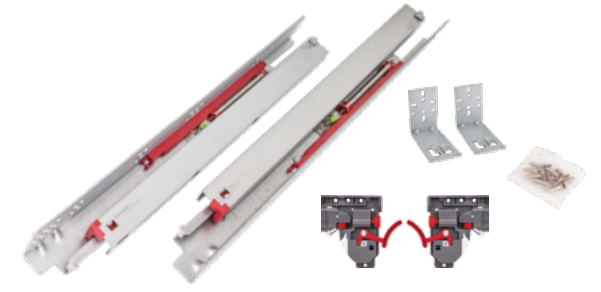
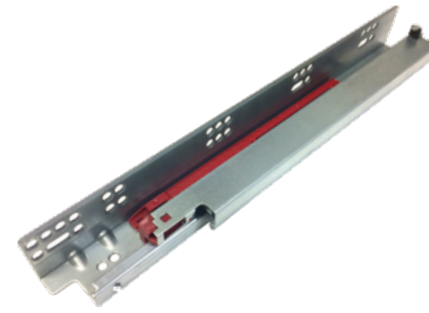
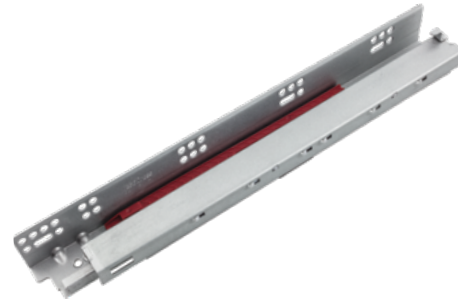


# HR Series Comparison



## Undermount Slides





Customer Favorite

Series	USE58-500	USE58-300	USE58
Category	Synchronized to Reduce Racking	EZ Open	All-In-One Kit
Grade 1 ANSI/BHMA Certified	100 lb.	100 lb.	100 lb.
Synchronization for Reduced Racking	✓		
Patented Attachment Clips with 6-Way Adjustability	✓	✓	
EZ Open: Relaxed pull force for easy opening	✓	✓	
Slotted Mounting Holes for Micro Adjustments	✓	✓	
Soft-Close	✓	✓	✓
Lengths	12"-24"	9"-24"	12"-21"
Compatible Clips	USCLIP500-2-6WZ, USCLIP500-2-4WZ, USCLIP500-2-4W	USCLIP2ND-6WZ, USCLIP2ND-4WZ, USCLIP2ND-4W, US-CLIP-NR, US-CLIP-2W	USE58-CLIP-4W, USE58-CLIP-2W
Website Link			



## Undermount Release Clips For 500 Series Slides

500 Series 6-Way Heavy-Duty Adjustable Clip with Zinc Base			
	<ul style="list-style-type: none"> <li>Vertical adjustment: Up to 3 mm (1/8")</li> <li>Horizontal adjustment: +/- 2 mm (5/64")</li> <li>Depth adjustment: Up to 3 mm (1/8")</li> </ul>	<ul style="list-style-type: none"> <li>Works for inset applications</li> <li>Heavy-duty die cast zinc base</li> </ul>	 9,101,213; 9,386,849; 9,408,463; 9,782,000; 9,986,829
	Description	Part Number	Ctn Qty
6-way adjustable clip with zinc base	USCLIP500-2-6WZ	200/ctn Packaged by pair (L/R)	

500 Series 4-Way Heavy-Duty Adjustable Clip with Zinc Base			
	<ul style="list-style-type: none"> <li>Vertical adjustment: Up to 3 mm (1/8")</li> <li>Horizontal adjustment: +/- 2 mm (5/64")</li> <li>Heavy-duty die cast zinc base</li> </ul>	 9,986,829	
	Description	Part Number	Ctn Qty
4-way adjustable clip with zinc base	USCLIP500-2-4WZ	200/ctn Packaged by pair (L/R)	

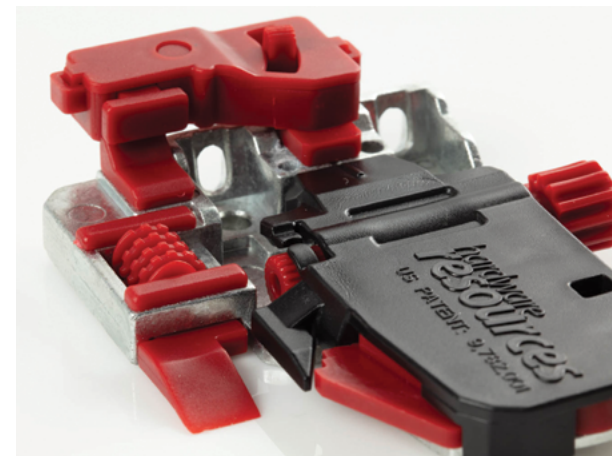
  

500 Series 4-Way Standard-Duty Adjustable Clip			
	<ul style="list-style-type: none"> <li>Vertical adjustment: Up to 3 mm (1/8")</li> <li>Horizontal adjustment: +/- 2 mm (5/64")</li> </ul>	 9,386,849; 9,408,463; 9,782,001	
	Description	Part Number	Ctn Qty
4-way adjustable clip	USCLIP500-2-4W	200/ctn Packaged by pair (L/R)	

### DRAWER BOX MINIMUM WIDTH (VARIES BY CLIP)

	USCLIP500-2-6WZ	USCLIP500-2-4WZ	USCLIP500-2-4W	USE58-CLIP-4W
5/8" (16 mm) material	8.25"	8.25"	8.25"	9.25"
1/2" (13 mm) material	8"	8"	8"	9"

#6 x 5/8" pan head screw recommended for installation

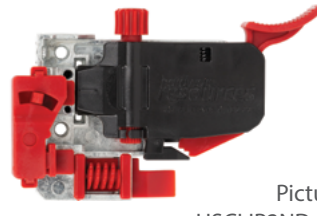



## Best-in-Class Undermount Clips



### 500 Series & 300 Series

- Easier installation and superior adjustability
- Tactile wheels for intuitive adjustment
- Improved clip and slide engagement



## Undermount Release Clips For 300 Series Slides

6-Way Heavy-Duty Adjustable Clip with Zinc Base			
	<ul style="list-style-type: none"> <li>Vertical adjustment: Up to 3 mm (1/8")</li> <li>Horizontal adjustment: +/- 2 mm (5/64")</li> <li>Depth adjustment: Up to 2.5 mm (3/32")</li> </ul>	<ul style="list-style-type: none"> <li>Works for inset applications</li> <li>Heavy-duty die cast zinc base</li> </ul>	 9,101,213; 9,386,849; 9,408,463; 9,782,001
	Description	Part Number	Ctn Qty
6-way adjustable clip with zinc base	USCLIP2ND-6WZ	200/ctn Packaged by pair (L/R)	


  

4-Way Heavy-Duty Adjustable Clip with Zinc Base			
	<ul style="list-style-type: none"> <li>Vertical adjustment: Up to 3 mm (1/8")</li> <li>Horizontal adjustment: +/- 2 mm (5/64")</li> <li>Heavy-duty die cast zinc base</li> </ul>	 9,101,213; 9,408,463; 9,782,001	
	Description	Part Number	Ctn Qty
4-way adjustable clip with zinc base	USCLIP2ND-4WZ	200/ctn Packaged by pair (L/R)	


  

4-Way Standard-Duty Adjustable Clip			
	<ul style="list-style-type: none"> <li>Vertical adjustment: Up to 3 mm (1/8")</li> <li>Horizontal adjustment: +/- 2 mm (5/64")</li> </ul>	 9,101,213	
	Description	Part Number	Ctn Qty
4-way adjustable clip	USCLIP2ND-4W	200/ctn Packaged by pair (L/R)	

2-Way Adjustable Narrow Clip			
	<ul style="list-style-type: none"> <li>Vertical adjustment: Up to 3 mm (1/8")</li> <li>Minimum drawer box width for 1/2" material = 4-1/2"</li> <li>Minimum drawer box width for 5/8" material = 4-7/8"</li> </ul>		
	Description	Part Number	Ctn Qty
2-way adjustable clip	US-CLIP-NR	100/ctn Packaged by pair (L/R)	

2-Way Adjustable Clip			
	<ul style="list-style-type: none"> <li>Vertical adjustment: Up to 3 mm (1/8")</li> <li>Die cast zinc base</li> </ul>		
	Description	Part Number	Ctn Qty
2-way adjustable clip	US-CLIP-2W	200/ctn Packaged by pair (L/R)	

### DRAWER BOX MINIMUM WIDTH (VARIES BY CLIP)

	US-CLIP2ND-6WZ	US-CLIP2ND-4WZ	US-CLIP2ND-4W	US-CLIP-2W	US-CLIP-NR
5/8" (16 mm) material	7.25"	7.25"	7.25"	6.25"	4.875"
1/2" (13 mm) material	7"	7"	7"	6"	4.5"

#6 x 5/8" pan head screw recommended for installation