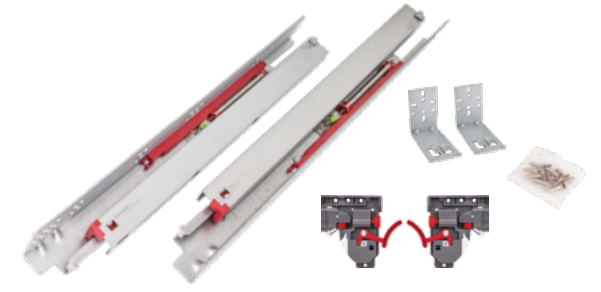
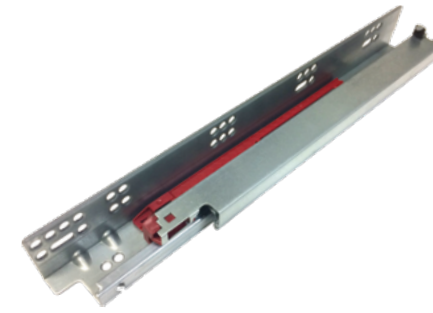
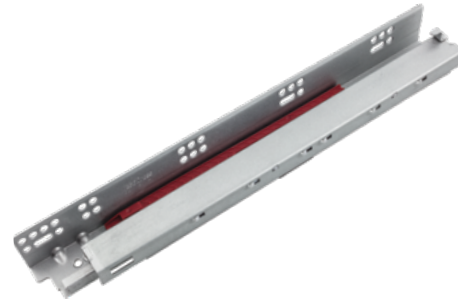


HR Series Comparison



Undermount Slides







 Customer Favorite

Series	USE58-500	USE58-300	USE58
Category	Synchronized to Reduce Racking	EZ Open	All-In-One Kit
Grade 1 ANSI/BHMA Certified	100 lb.	100 lb.	100 lb.
Synchronization for Reduced Racking	✓		
Patented Attachment Clips with 6-Way Adjustability	✓	✓	
EZ Open: Relaxed pull force for easy opening	✓	✓	
Slotted Mounting Holes for Micro Adjustments	✓	✓	
Soft-Close	✓	✓	✓
Lengths	12"-24"	9"-24"	12"-21"
Compatible Clips	USCLIP500-2-6WZ, USCLIP500-2-4WZ, USCLIP500-2-4W	USCLIP2ND-6WZ, USCLIP2ND-4WZ, USCLIP2ND-4W, US-CLIP-NR, US-CLIP-2W	USE58-CLIP-4W, USE58-CLIP-2W
Website Link			

Undermount Release Clips For 500 Series Slides

500 Series 6-Way Heavy-Duty Adjustable Clip with Zinc Base			
	<ul style="list-style-type: none"> Vertical adjustment: Up to 3 mm (1/8") Horizontal adjustment: +/- 2 mm (5/64") Depth adjustment: Up to 3 mm (1/8") 	<ul style="list-style-type: none"> Works for inset applications Heavy-duty die cast zinc base 	 9,101,213; 9,386,849; 9,408,463; 9,782,00; 9,986,829
	Description	Part Number	Ctn Qty
6-way adjustable clip with zinc base	USCLIP500-2-6WZ	200/ctn Packaged by pair (L/R)	

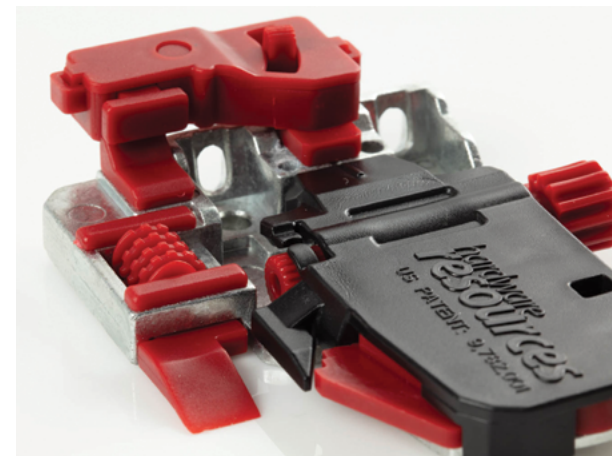
500 Series 4-Way Heavy-Duty Adjustable Clip with Zinc Base			
	<ul style="list-style-type: none"> Vertical adjustment: Up to 3 mm (1/8") Horizontal adjustment: +/- 2 mm (5/64") Heavy-duty die cast zinc base 	 9,986,829	
	Description	Part Number	Ctn Qty
4-way adjustable clip with zinc base	USCLIP500-2-4WZ	200/ctn Packaged by pair (L/R)	

500 Series 4-Way Standard-Duty Adjustable Clip			
	<ul style="list-style-type: none"> Vertical adjustment: Up to 3 mm (1/8") Horizontal adjustment: +/- 2 mm (5/64") 	 9,386,849; 9,408,463; 9,782,001	
	Description	Part Number	Ctn Qty
4-way adjustable clip	USCLIP500-2-4W	200/ctn Packaged by pair (L/R)	

DRAWER BOX MINIMUM WIDTH (VARIES BY CLIP)

	USCLIP500-2-6WZ	USCLIP500-2-4WZ	USCLIP500-2-4W	USE58-CLIP-4W
5/8" (16 mm) material	8.25"	8.25"	8.25"	9.25"
1/2" (13 mm) material	8"	8"	8"	9"

#6 x 5/8" pan head screw recommended for installation

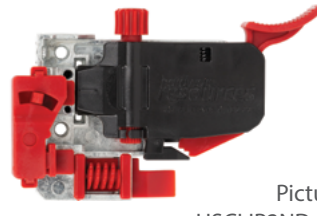





Best-in-Class Undermount Clips



500 Series & 300 Series


- Easier installation and superior adjustability
- Tactile wheels for intuitive adjustment
- Improved clip and slide engagement

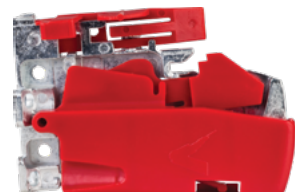
Undermount Release Clips For 300 Series Slides

6-Way Heavy-Duty Adjustable Clip with Zinc Base			
	<ul style="list-style-type: none"> Vertical adjustment: Up to 3 mm (1/8") Horizontal adjustment: +/- 2 mm (5/64") Depth adjustment: Up to 2.5 mm (3/32") 	<ul style="list-style-type: none"> Works for inset applications Heavy-duty die cast zinc base 	 9,101,213; 9,386,849; 9,408,463; 9,782,001
	Description	Part Number	Ctn Qty
6-way adjustable clip with zinc base	USCLIP2ND-6WZ	200/ctn Packaged by pair (L/R)	

4-Way Heavy-Duty Adjustable Clip with Zinc Base			
	<ul style="list-style-type: none"> Vertical adjustment: Up to 3 mm (1/8") Horizontal adjustment: +/- 2 mm (5/64") Heavy-duty die cast zinc base 	 9,101,213; 9,408,463; 9,782,001	
	Description	Part Number	Ctn Qty
4-way adjustable clip with zinc base	USCLIP2ND-4WZ	200/ctn Packaged by pair (L/R)	

4-Way Standard-Duty Adjustable Clip			
	<ul style="list-style-type: none"> Vertical adjustment: Up to 3 mm (1/8") Horizontal adjustment: +/- 2 mm (5/64") 	 9,101,213	
	Description	Part Number	Ctn Qty
4-way adjustable clip	USCLIP2ND-4W	200/ctn Packaged by pair (L/R)	

2-Way Adjustable Narrow Clip			
	<ul style="list-style-type: none"> Vertical adjustment: Up to 3 mm (1/8") Minimum drawer box width for 1/2" material = 4-1/2" Minimum drawer box width for 5/8" material = 4-7/8" 		
	Description	Part Number	Ctn Qty
2-way adjustable clip	US-CLIP-NR	100/ctn Packaged by pair (L/R)	

2-Way Adjustable Clip			
	<ul style="list-style-type: none"> Vertical adjustment: Up to 3 mm (1/8") Die cast zinc base 		
	Description	Part Number	Ctn Qty
2-way adjustable clip	US-CLIP-2W	200/ctn Packaged by pair (L/R)	

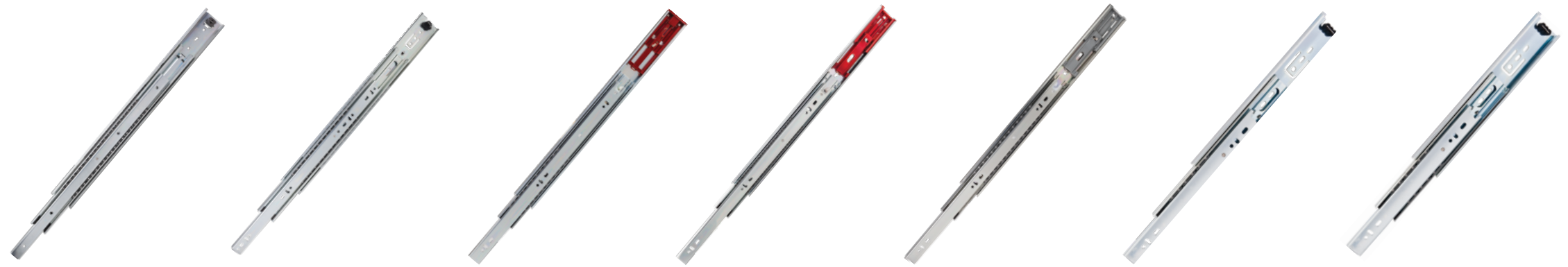
DRAWER BOX MINIMUM WIDTH (VARIES BY CLIP)

	US-CLIP2ND-6WZ	US-CLIP2ND-4WZ	US-CLIP2ND-4W	US-CLIP-2W	US-CLIP-NR
5/8" (16 mm) material	7.25"	7.25"	7.25"	6.25"	4.875"
1/2" (13 mm) material	7"	7"	7"	6"	4.5"

#6 x 5/8" pan head screw recommended for installation

HR Series Comparison

Ball Bearing Slides



✓ Customer Favorite

Series	209FU	300FU	303-200	303-300	303FUSFT	303FU	303-50
Grade 1 ANSI/BHMA Certified	225 lb.	200 lb.	100 lb.	100 lb.	100 lb.	100 lb.	100 lb.
Commercial	✓	✓					
Push-To-Open			✓				
Soft-Close				✓	✓		
Cage Hold Forward: Holds ball-bearing cage at front of drawer for easy drawer installation			✓	✓	✓	✓	✓
EZ Open: Relaxed pull force for easy opening				✓			
Side Spacing	3/4"	1/2"	1/2"	1/2"	1/2"	1/2"	1/2"
Material Thickness (Cold-Rolled Steel)	2.2 x 2.0 x 2.0 mm	1.5 x 1.5 x 1.5 mm	1.0 x 1.0 x 1.2 mm	1.0 x 1.0 x 1.2 mm	1.0 x 1.0 x 1.2 mm	1.0 x 1.0 x 1.2 mm	0.9 x 0.9 x 1.2 mm
Profile Height	54 mm	51 mm	45 mm	45 mm	45 mm	45 mm	45 mm
Face Frame or Frameless Cabinet Compatibility	Frameless Only	Frameless Only	Both	Both	Both	Both	Both
Lengths	16"-30"	12"-28"	14"-22"	10"-28"	12"-28"	8"-28"	12"-24"
Website Link							

HR Series Comparison

Epoxy Slides



✓ Customer Favorite

Series	9400/9500	5000	2000
Category	Heavy-Duty	Medium-Duty	Standard-Duty
Grade 1 ANSI/BHMA Certified	100 lb.	75 lb.	75 lb.
Double Captive	✓		
32 mm System Compatible	✓	✓	✓
Profile Height	1-5/8"	1-7/16"	1-7/16"
Lengths	16"-22"	14"-24"	12"-22"
Website Link			

Revised 03-2023

Choosing Slides for the Job

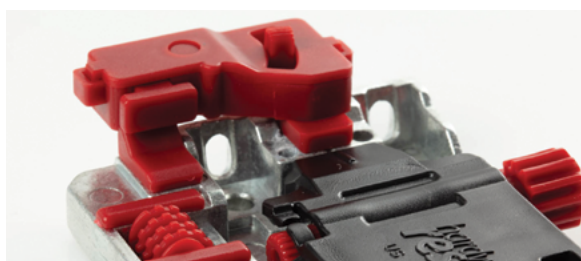


Each drawer application calls for a certain type of slide. Hardware Resources has outlined each slide type's defining features and benefits to help make it easy to choose the best slide style for your customer.

Undermount Slides



- Slides are concealed from view, letting the drawer box's beauty shine
- Synchronized option removes the side-to-side racking
- Reduced side spacing decreases the gap between the drawer box and the cabinet opening
- Full extension
- Soft-close movement standard



Ball Bearing Slides



- Full extension
- Soft-close options available
- Push-to-open options available
- Wide selection of lengths and weight ratings available



Epoxy Slides



- 3/4 extension
- Self-close movement

